

# Range extension of *Tylotriton uyanoi* discovered in Mae Wong National Park, Kamphaeng Phet province, western Thailand

Extension de l'aire de *Tylotriton uyanoi* découvert dans le Parc national de Mae Wong, province de Kamphaeng Phet, ouest de la Thaïlande.

Porraware POMCHOTE<sup>(1)</sup>, Wichase KHONSUE<sup>(1)</sup>, Panupong THAMMACHOTTI<sup>(1)</sup>, Pitak SAPEWISUT<sup>(2)</sup> et Axel HERNANDEZ<sup>(3)</sup>

<sup>(1)</sup> Department of Biology, Faculty of Science, Chulalongkorn University, Bangkok 10330, Thailand.

<sup>(2)</sup> Department of Biology, Faculty of Science, Chiang Mai University, Chiang Mai 50200, Thailand.

<sup>(3)</sup> \*Department of Environmental Sciences, Faculty of Sciences and Technics, University Pasquale Paoli of Corsica, Corte, 20250, France.

Corresponding author email: Axel Hernandez - hernandez.axel.1989@gmail.com

**Résumé – Extension d'aire de *Tylotriton uyanoi* découvert au Parc National de Mae Wong, province de Kamphaeng Phet, Thaïlande de l'Ouest. La salamandre crocodile d'Uéno a été observée pour la première fois au parc national de Mae Wong dans la province de Khamphaeng Phet, Thaïlande de l'ouest. Une seule femelle adulte a été trouvée au site de campement de Chong Yen dans la partie nord-ouest du parc à 1,322 m a.s.l. par Sukhuan Yangwachana. De nouvelles populations sont probablement présentes dans les montagnes environnantes. Nous discutons brièvement de la distribution de l'espèce.**

Crocodile newts of the genus *Tylotriton* inhabits tropical and subtropical, moist broadleaf and montane evergreen forests close to water bodies, ephemeral ponds or small streams and springs at moderate to high elevations between 1,200 and 1,900 m above mean sea level (a.s.l.) in northern Thailand (Pomchote *et al.* 2008, Nishikawa *et al.* 2013, Hernandez 2016a,b, Dowwiangkan *et al.* 2018, Hernandez & Pomchote 2020a,b,c). Five species are reported in the mountainous and steep regions of this country including: *T. uyanoi*, *T. panhai*, *T. anguliceps*, *T. verrucosus* and *T. phukhaensis* (Nishikawa *et al.* 2013, Le *et al.* 2015, Pomchote *et al.* 2020a,b). Many field surveys were done in recent years to assess the poorly known distribution, natural history and ecological preferences of these threatened crocodile newts (Hernandez 2015, 2016a,b, Hernandez & Pomchote 2020a,c).

*Tylotriton uyanoi* shows the widest distribution compared to other crocodile newts found in Thailand (Hernandez *et al.* 2019, Hernandez & Pomchote 2020c). The species occurs in the northwestern parts of Thailand through the Daen Lao Hills, the Thanon Thong Chai Range up to the Dawna Range including Doi Ang Khang, Doi Chang Kien, Chiang Dao Wildlife Sanctuary, Doi Inthanon, Doi Pui, Doi

Suthep in Chiang Mai province; Namtok Mae Surin in Mae Hong Son province; Doi Mon Jong, Doi Soi Malai, Umphang Wildlife Sanctuary in Tak province and Khao Laem National Park in Kanchanaburi province (Pomchote *et al.* 2008, Nishikawa *et al.* 2013, Hernandez 2015, 2016a,b, Hernandez *et al.* 2019, Hernandez & Pomchote 2020c).

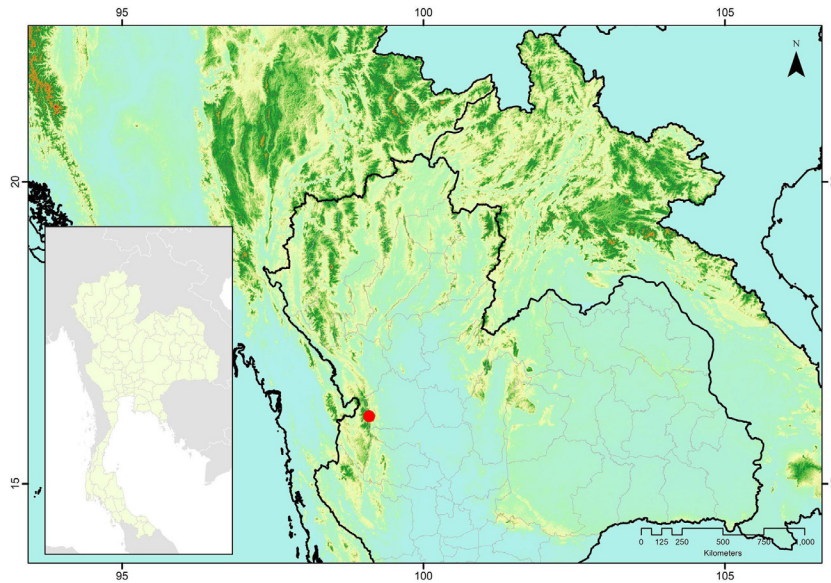
Here we report a new locality of *T. uyanoi* in western Thailand (Fig. 1). On 2 September 2020, around 8.00 a.m. in foggy weather at Chong Yen campsite and viewpoint located at northwestern part of Mae Wong National Park, Kamphaeng Phet province, western Thailand (16°06'01" N, 99°06'28" E) at 1,322 m a.s.l., Mr. Sukhuan Yangwachana, a park ranger, accidentally found one adult female (Fig. 2) hiding in a large grassland around a camping site through mixed broadleaf and montane evergreen forest (Fig. 3). The specimen showed morphological characters of *T. uyanoi* as previously described (Nishikawa *et al.* 2013, Pomchote *et al.* 2020a) by having snout rounded to blunt, the cranial crests wide and rather curved medially at posterior end, the sagittal ridge on the head distinct, the vertebral ridge wide and segmented, and the rib nodules rounded and isolated. This specimen had dark orange markings on the head, trunk, limbs, and tail. The venter is

moderately lighter than the dorsum. It measured a total length (TL) of about 170 mm.

Lastly, our new record supports that crocodile newts inhabit mainly moist mixed deciduous and hill evergreen forests in mountainous and steep areas through the southern Daen Lao range, the Dawna range up to the northern Tenasserim hills in the northwestern parts of Thailand (Pomchote *et al.* 2008, Nishikawa *et al.* 2013, Hernandez *et al.* 2019,

Hernandez & Pomchote 2020c). More field surveys are needed to resolve the exact distribution of *T. uyenoii* and to establish conservation priorities.

**Acknowledgements:** We would express our thanks to Kitiphat Tarapiban, Tongchai Thitiphuree and Chatmongkon Suwannapoom for kind support in our field work. We would like to thank Sukhuan Yangwachana for the precious information. We also thank the Department of National Parks, Wildlife and Plant Conservation (DNP) and the Chulalongkorn University.



**Figure 1** - Map showing the new record of *T. uyenoii* found in Mae Wong National Park, Kamphaeng Phet province, western Thailand.

**Figure 1** - Carte montrant le nouveau signalement de *T. uyenoii* trouvé dans le parc national de Mae Wong, province de Kamphaeng Phet, ouest de la Thaïlande.



**Figure 2** - Adult female of *T. uyenoii* found at the new locality. Picture: Sukhuan Yangwachana.

**Figure 2** - Femelle adulte de *T. uyenoii* trouvée dans la nouvelle localité. Photo : Sukhuan Yangwachana.



**Figure 3** – General view of the habitat where the specimen was found. Picture: Porrawee Pomchote.

**Figure 3** - Vue générale de l'habitat où le spécimen a été trouvé. Photo : Porrawee Pomchote.

## REFERENCES

- Dowwiangkan T., Ponpituk Y., Chuaynkern C., Chuaykern Y. & Duengkae, P. 2018 – Population and habitat selection of *Tylototriton uyanoi* in Maesa-Kogma Biosphere Reserve, Chiang Mai Province, northern Thailand. *Alytes*, 36: 300-313.
- Hernandez A. 2015 – Etude des Amphibiens Urodèles en voie d'extinction et mise en place de projets de conservation au Parc Zoologique de Thoiry. Master Thesis – Biology and Ecology. Università di Corsica Pasquale Paoli, Corte, France. 224 pp.
- Hernandez A. 2016a – Crocodile Newts, The Primitive Salamandridae from Asia (Genera *Echinotriton* and *Tylototriton*). Edition Chimaira. 415 pp.
- Hernandez A. 2016b – *Tylototriton* Anderson, 1871: Observation du genre en Thaïlande et éléments de réflexions sur la diversité des sous-genres *Yaotriton* et *Tylototriton*. *Situla Revue Francophone d'Herpétoculture*, 28: 12-25.
- Hernandez A. 2017 – New localities for *Tylototriton panhai* and *Tylototriton uyanoi* Nishikawa, Khonsue, Pomchote and Matsui, 2013 in northern Thailand. *Bull. Soc. Herp. Fr.*, 162: 110-112.
- Hernandez A., Escoriza D. & Hou M. 2018 – Patterns of niche diversification in south-east Asian crocodile newts. *Zool. Anz.*, 276: 86-93.
- Hernandez A., Escoriza D., Pomchote P. & Hou M. 2019 – New localities for *Tylototriton uyanoi*, *T. panhai* and *T. anguliceps* in Thailand with remarks on the southernmost distribution of the genus. *Herpetol. Bull.*, 147: 15-18.
- Hernandez A. & Pomchote P. 2020a – Habitat, distribution and life history of the polytypic Panha's Crocodile Newt, *Tylototriton panhai* in northeastern Thailand. *Alytes*, 37: 26-47.
- Hernandez A. & Pomchote P. 2020b – New locality of the Angular-headed crocodile newt *Tylototriton anguliceps* Le et al., 2015, with remarks on the distribution of the genus in Thailand. *Herpetol. Notes*, 13: 993-996.
- Hernandez A. & Pomchote P. 2020c – New southernmost record for the genus *Tylototriton* in Asia: *Tylototriton uyanoi* Nishikawa, Khonsue, Pomchote and Matsui 2013 discovered in Khao Laem National Park, Kanchanaburi province, western Thailand. *Bull. Soc. Herp. Fr.*, 175: 164-167.
- Le D.T., Nguyen T.T., Nishikawa K., Nguyen S.L.H., Pham A.V., Matsui M., Bernardes M. & Nguyen T.Q. 2015 – A new species of *Tylototriton* Anderson, 1871 (Amphibia: Salamandridae) from Northern Indochina. *Curr. Herpetol.*, 34: 38-50.
- Nishikawa K., Khonsue W., Pomchote P. & Matsui M. 2013 – Two new species of *Tylototriton* from Thailand (Amphibia: Urodela: Salamandridae). *Zootaxa*, 3737: 261-279.
- Pomchote P., Pariyanonth P. & Khonsue W. 2008 – Two distinctive color patterns of the Himalayan newt *Tylototriton verrucosus* (Urodela: Salamandridae) found in Thailand and its implication on geographic segregation. *The Natural History Journal of Chulalongkorn University*, 8: 35-43.
- Pomchote P., Khonsue W., Sapewisut P., Eto K. & Nishikawa K. 2020a – Discovering a population of *Tylototriton verrucosus* (Caudata: Salamandridae) from Thailand: implications for conservation. *Trop. Nat. Hist.*, 20: 1-15.
- Pomchote P., Khonsue W., Thammachoti P., Hernandez A., Peerachidacho P., Suwannapoom C., Onishi Y. & Nishikawa K. 2020b – A new species of *Tylototriton* (Urodela: Salamandridae) from Nan Province, Northern Thailand. *Trop. Nat. Hist.*, 20: 144-161.